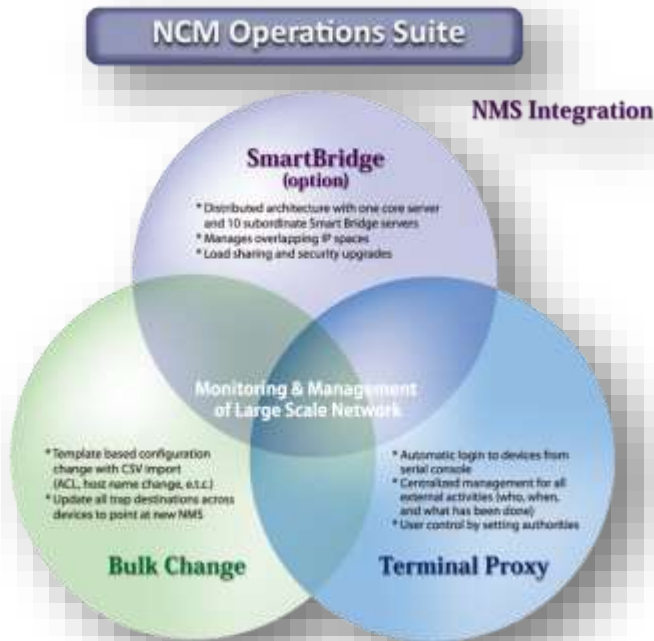


Net LineDancer includes advanced NCM features to meet the management needs of large scale Carriers, ISPs, MSPs and data centers. Below are some of the features tailored to these large deployments including: automation, multitenancy, multi-vendor support, rich toolsets, reporting, custom tool creation, policy compliance features, roles assignment...and much more.



Carrier Operations Suite

SmartBridge - Besides enabling support for overlapping IP spaces, the SmartBridge allows network operations to occur geographically closer to the devices under management.

SmartChange - SmartChange templates for running unique commands against devices all at once, created with a point and click interface, supporting per-device value parameterization, and Excel spreadsheet import and export.

Terminal Proxy - allows users to SSH into netLD, followed by "jumping" into inventory devices with automatic login and full session recording.

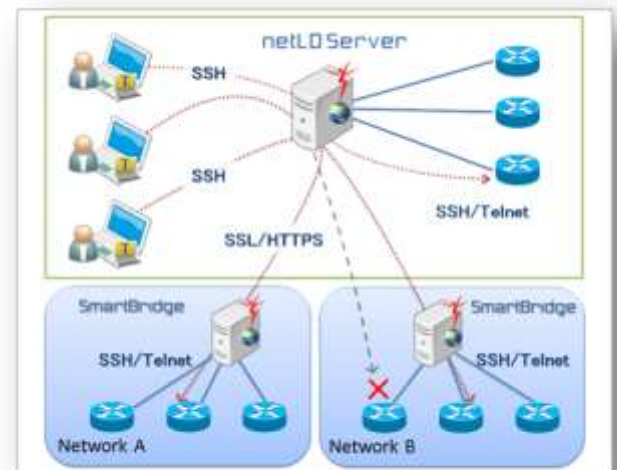
SMARTBRIDGE for overlapping subnets

Place SmartBridge at each of your locations and they will all be managed centrally from the core netLD server. This enables management of devices with duplicate (routing domain) IP addresses, and reduces the bandwidth between the remote network and the core netLD server.

Distributed Architecture - SmartBridge takes charge of processing configuration backups and performing changes and transfers only detected changes to the core server. Using the SmartBridge greatly simplifies managing devices across NATs and discrete networks in a secure fashion.

Uniform Management - Since everything is stored in the core server, no information is lost in the case of trouble on the SmartBridge and only the core server needs to be backed up.

Software Update - When the core server's software updates, all of the SmartBridges that are linked to the core server will automatically be updated as well.



REPORTING

Net LineDancer provides complete hardware inventory including slot and daughter cards. Net LineDancer can create reports on devices, inventory, configurations, and more. Separate reports can easily be created for each of your customers' networks as well as specific subsets of your inventory.

SMARTCHANGE applying unique change to multiple device at one time

e.g.) Password Change template
Setting different passwords for each devices.

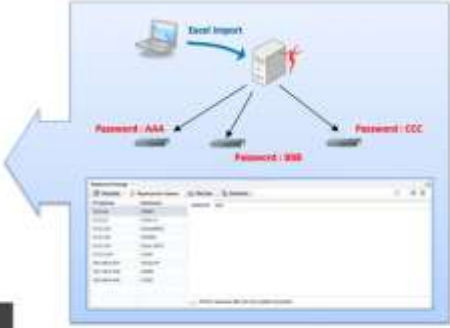
```
conf t
enable password variable
exit
write mem
```

e.g.) Access List Change template
Setting different access-list settings for each devices.

```
conf t
ip access-list extended variable
80 permit ip host variable host variable
843 permit ip host variable host variable
...
end
write mem
```

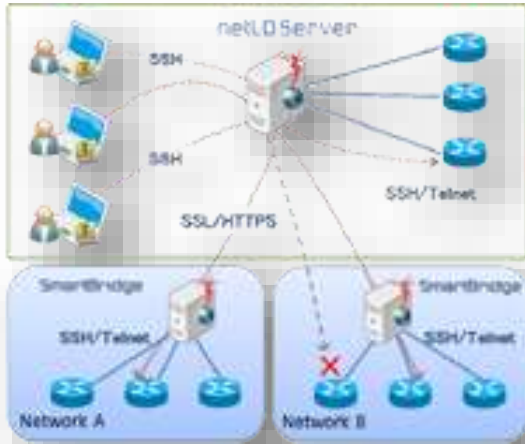
e.g.) Network manager host IP change template
Setting different network manager host IP address settings for each devices.

```
conf t
snmp-server host variable
end
write mem
```



Net LineDancer provides a parameterized template based mechanism for running set of changes against devices. This allows you to easily create a template of commands to run against large number of devices where each device has minor differences in the commands to run. SmartChange can also be reused for commands that must be run more frequently but whose values change each time the changes need to run. This greatly simplifies things like mass password or access list changes.

TERMINAL PROXY allowing you to login device automatically



As of version 12.03, NetLD provides an SSH server that can be used for easy, secure terminal access to all of the devices in your inventory. All interactions through this proxy are logged and searchable including information such as who, when, which device, and what commands have been run.

INTEGRATION WITH NMS

Net LineDancer integrates network monitoring and management systems with notifications for any configuration changes, backup failures, and any detected compliance violations. This easily allows you to correlate monitor activity with actual changes that have happened on the network.



DATA EXPORT & IMPORT



Allows users to export data from netLD, edit it, and then import it back into netLD. Some available import and export features are:

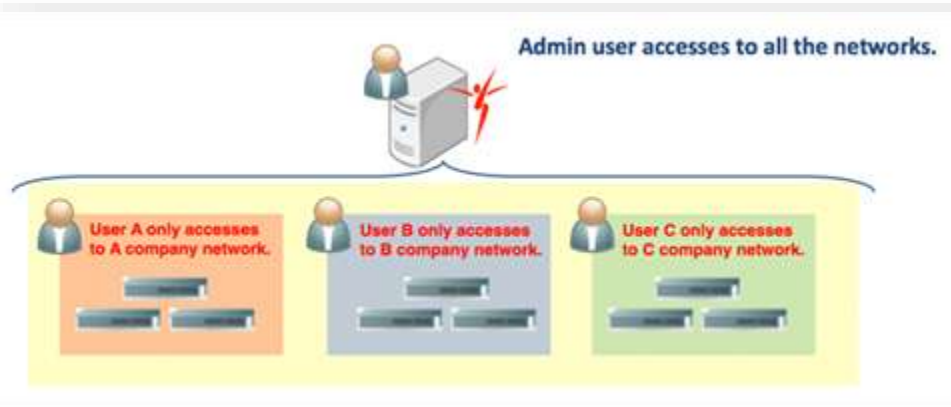
- import and export the device inventory including all configurations
- import device credential configuration
- export tool result output
- import and export bulk updates settings
- import Cisco PnP* configuration (optional)
- Zero-Touch has changed the name to Cisco Plug and Play from Net LineDancer ver.14.06.

CUSTOM FIELDS allow you to create and edit 5 columns for unique sorting

The screenshot shows a table of network devices in the netLD interface. The table has columns for IP Address, Location, and several custom fields. Below the table, three red boxes highlight the custom fields: 'Custom field for company A.', 'Custom field for company B.', and 'Custom field for company C.' The table data includes columns for IP Address, Location, Hostname, Serial Number, and Model, with rows for various devices like '10.0.0.10', '10.0.0.11', etc.

Each device has a set of custom fields that allows association of additional information with each device in the inventory. These fields are completely searchable and read and write access to each field can be configured for each user.

USER ACCESS CONTROL



Net LineDancer has user-defined roles based on a granular permission system that allows you to easily manage access for each user.

ADVANCED DEVICE SEARCH

Provides the ability to run cross-cutting searches across the various device inventory fields: IP address, Hostname, Backup Status (Success/Failure), Date when changes occurred, Device Tags, Custom Fields, Vendor, Model, Version, and Serial Number.