



Net LineDancer v13 Install Guide for Windows

Revision History

Revision Subject	Revisions
Fourth Edition (v13.08)	Created due to Upgrade (2014/07/30)
Third Edition (v13.08)	Created due to Upgrade (2013/09/03)
Second Edition (v12.03)	Created due to Upgrade (2012/06/04)
First Edition (v11.04)	Created as a First Edition (2011/07/29)

LogicVein, Inc.
www.logicvein.com
Tel: +81-44-852-4200
Fax: +81-44-854-0979
Mail: support@logicvein.com



Introduction	3
1 Overview	3
2 Port Usage	4
3 Installation	5
3-1 Precautions for Installation	5
3-2 About License	5
3-3 Installation Procedures	5
3-4 Commercial version-Internet available	6
3-5 Commercial version-Internet not available	10
3-6 Evaluation version- Internet available	14
3-7 Evaluation version- Internet not available	19
3-8 How to subscription license is updated in netLD?	22
4 Directories	23
5 Service Management and Login	24
5-1 Service	24
5-2 Login	25
Contacts	28

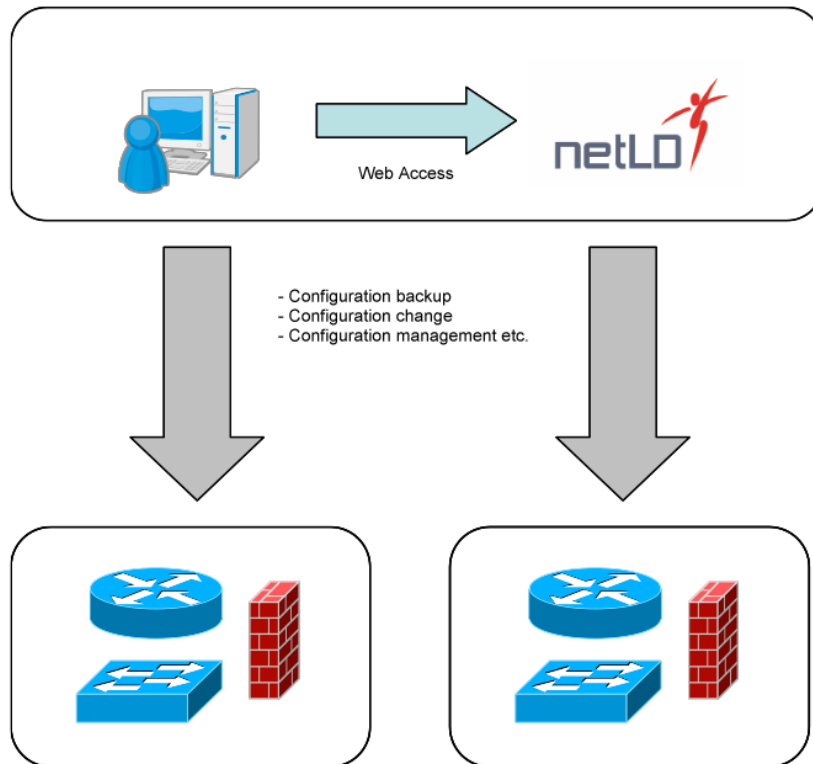
Introduction

This manual describes the functional overview and the operation methods from the installation to login of our product lines Net LineDancer v13.08 (hereafter referred to as “netLD”).

1 Overview

netLD is designed to help network engineers manage the configurations of the network devices, for example, routers or switches in their enterprises.

netLD provides inventory reports, browse of properties, configurations comparisons, password changes and automatically detecting configuration changes, reporting to NMS.



2 Port Usage

netLD uses the following ports. Set the network transmission of netLD servers and devices depending on using protocols, in case where accessing to the target devices through a firewall.

Net LineDancer Server/Smart Bridge ↔ Managed Device

Function	Protocol	Port	UDP/TCP	Direction
Zero-Touch	DHCP	67	UDP	netLD <-- dest
		68		netLD --> dest
	HTTP	80	TCP	netLD <-- dest
	TFTP	69	UDP	netLD <-- dest
	ICMP	-	-	netLD <-- dest
Discovery	SSH, Telnet	22,23	TCP	netLD --> dest
	SNMP	161	UDP	netLD --> dest
	ICMP	-	-	netLD --> dest
Setting Upload (restoring configurations)	TFTP	69	UDP	netLD <-- dest
Setting change tool *1	SSH, Telnet	22,23	TCP	netLD --> dest
Trap sending	SNMP	162	UDP	netLD --> dest
Real-time change detection	Syslog	514	UDP	netLD <-- dest
Backup tool *2	SSH, Telnet	22,23	TCP	netLD --> dest
	SNMP	161	UDP	netLD --> dest
	TFTP	69	UDP	netLD <-- dest
	FTP	21	TCP	netLD <-- dest

*1 Configured CLI protocols are used.

*2 According to the models of devices.

e.g.) Adapter for IOS: CLI (Telnet, SSH) or both of CLI and TFTP are used.

e.g.) Adapter for Alaxala: CLI (Telnet, SSH), FTP, SNMP are used.

Net LineDancer Server ← Client

	Protocol	Port	TCP/UDP	Direction
Client (Web Browser)	HTTPS	443	TCP	netLD <-- client

Net LineDancer Server → Smart Bridge

	Protocol	Port	TCP/UDP	Direction
Smart Bridge	HTTPS	10443	TCP	netLD --> Smart Bridge

3 Installation

3-1 Precautions for Installation

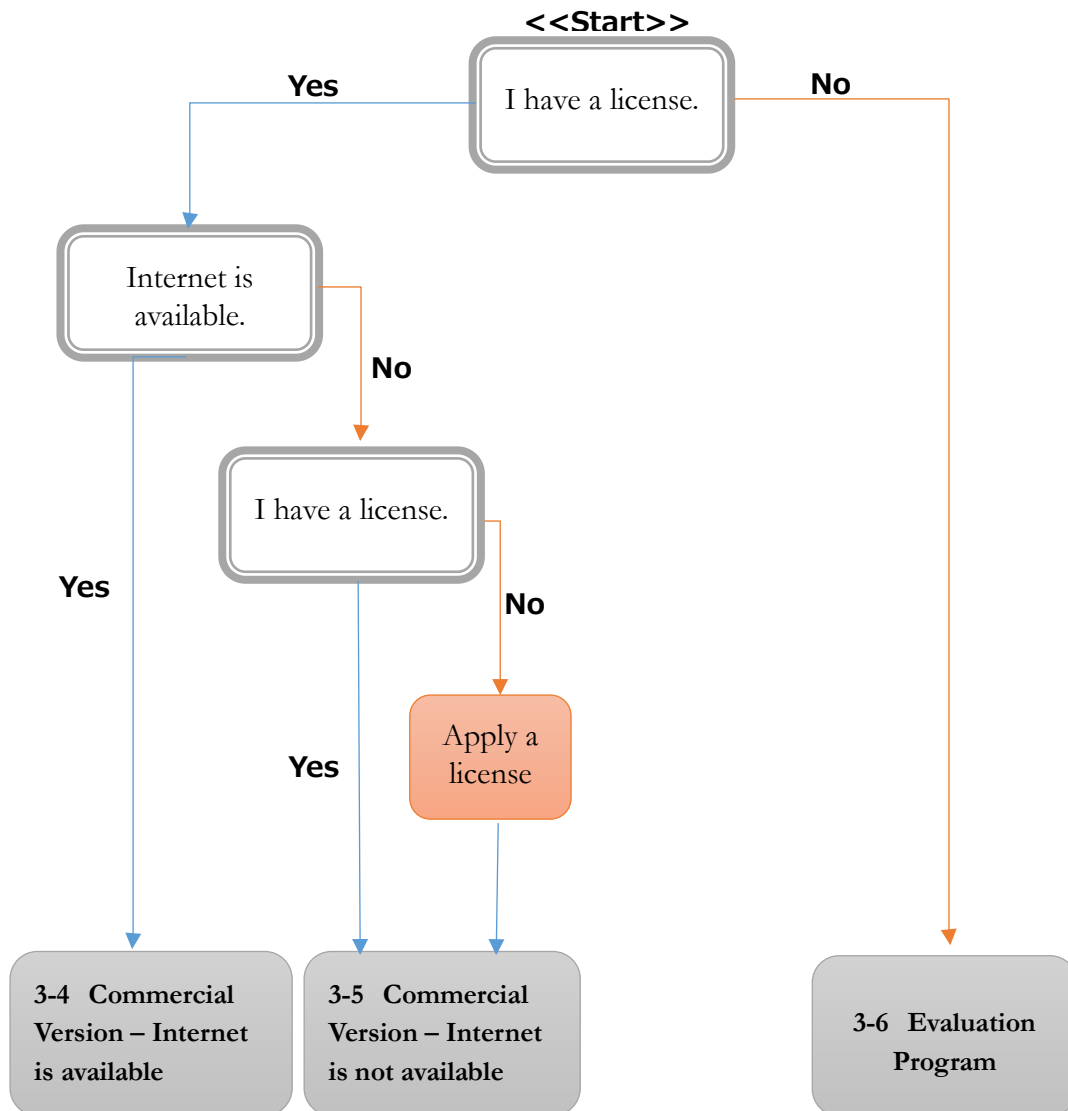
- Program would not function collect if port netLD uses are used by other applications.
- An Administer user must do installation.

3-2 About License

Activation of netLD basically authenticates online. Install the program at the environment where internet is available. In case of installing the program at the environment where internet is not available, please contact [LogicVein Customer Support](#). To issue a license, MAC address of the server which netLD is installed is required.

3-3 Installation Procedures

Follow the flow chart below and proceed installation.



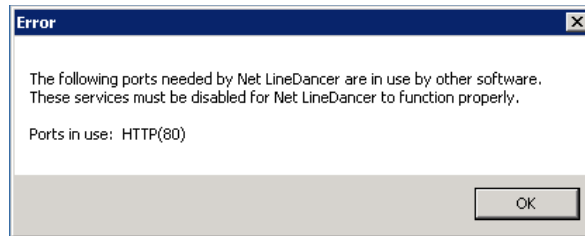
3-4 Commercial version-Internet available

Follow the procedure below with License Key of Net LineDancer.

1. Copy the netLD install program (netld-Enterprise-vesion-64bit.exe) to the target server and double click.
2. Select a language.



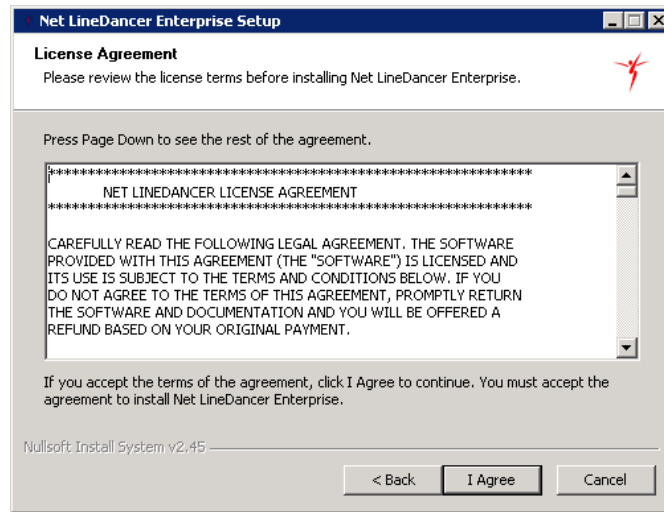
After selecting language to use, netLD checks port use and the following error message will be displayed if there is another application using the required port.



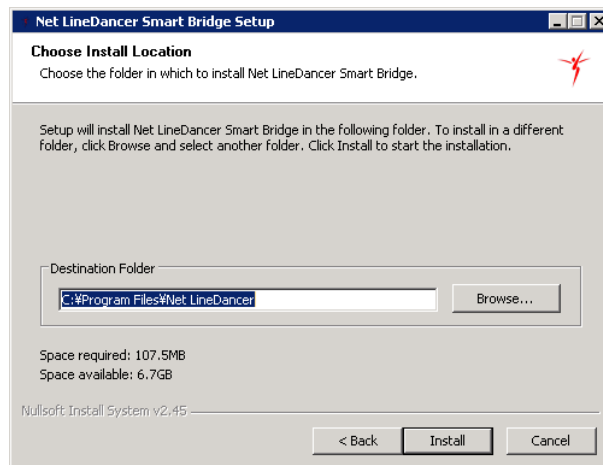
3. Setup wizard will be started. Click on the **Next** button to go License Agreement dialog.



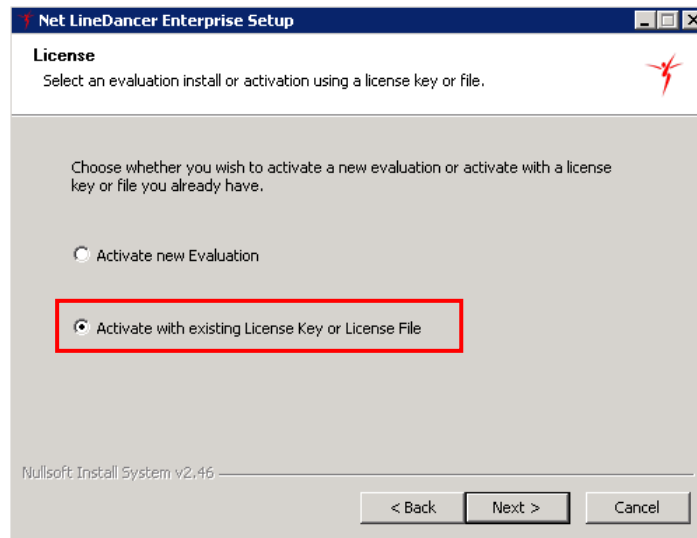
- In the License Agreement dialog, use page down control to read the rest of the agreement and click on the **I Agree** button to continue.



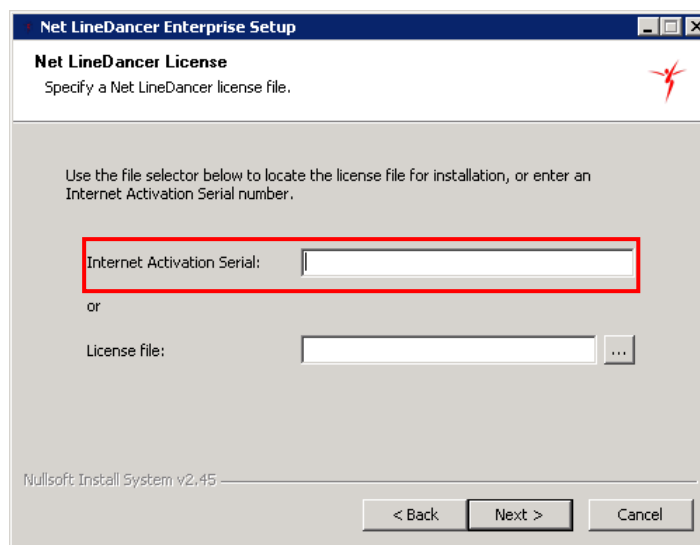
- Specify the install folder by using **Browse...** button and click on the **Next** button.



6. Select **Activate with existing License Key or License File** and click on the **Next** button.



7. In the Internet Activation Serial field, enter your serial number and click **Next**. netLD accesses automatically to our server for authentication of the license.



- In the SSL Certificate dialog, enter required information of the followings and click on the **Install** button.



Note: Information entered for SSL Certification in this dialog can be edited after installation. See [23-2 Update of SSL Certification](#) for the details.

- Installation process will be started. Click on the **Next** button if Installation Complete dialog is displayed.



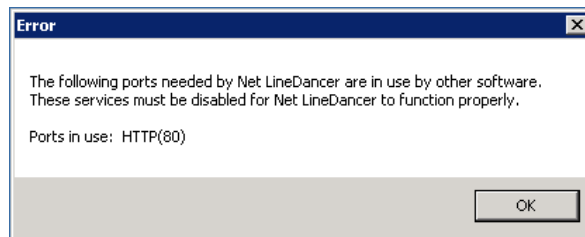
3-5 Commercial version-Internet not available

If there is no Internet connection, a license file is required to be applied. Please contact to support@logicvein.com if you have no license file. At that time, MAC Address of the install server is required. If there are multiple NIC, send one of them that are connected with the cable.

1. Copy the netLD install program (netld-Enterprise-vesion-64bit.exe) to the target server and double click.
2. Select a language.



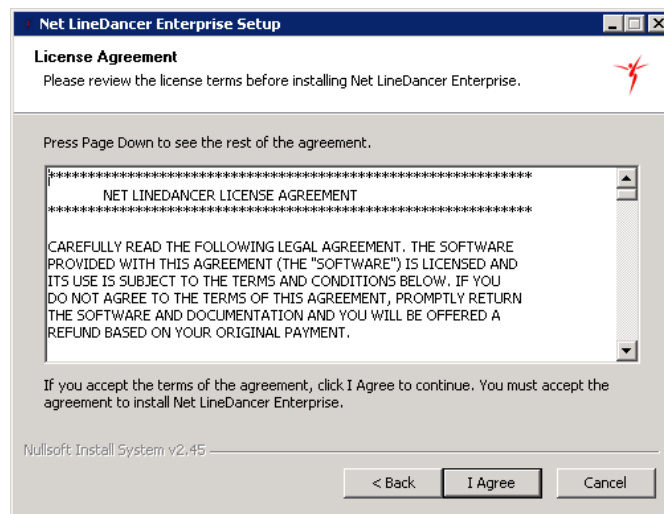
After selecting language to use, netLD checks port use and the following error message will be displayed if there is another application using the required port.



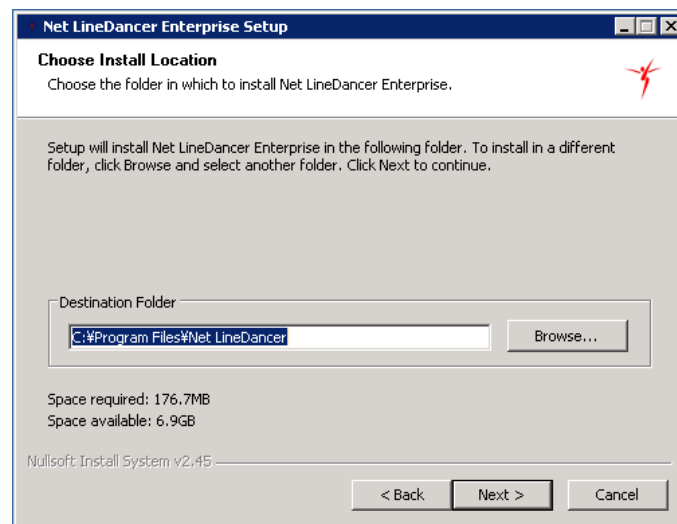
3. Setup wizard will be started. Click on the **Next** button to go License Agreement dialog.



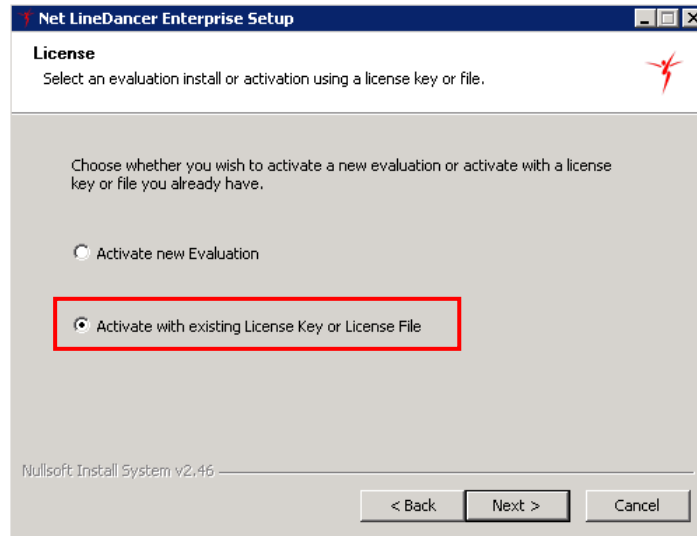
- In the License Agreement dialog, use page down control to read the rest of the agreement and click on the **I Agree** button to continue.



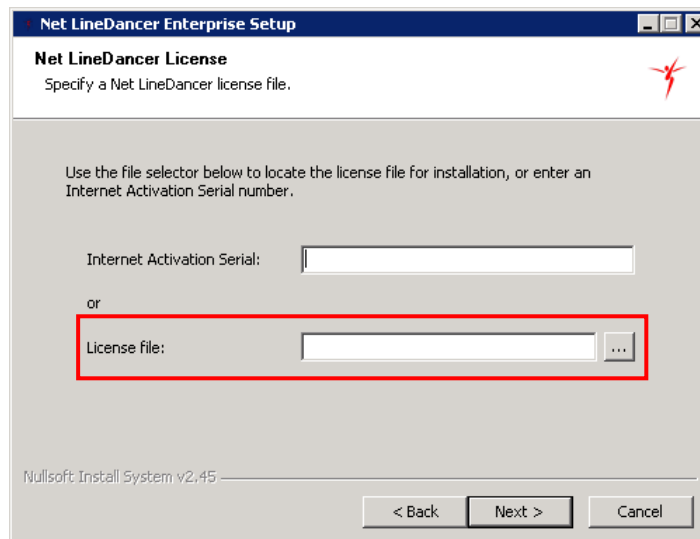
- Specify the install folder by using **Browse...** button and click on the **Next** button.



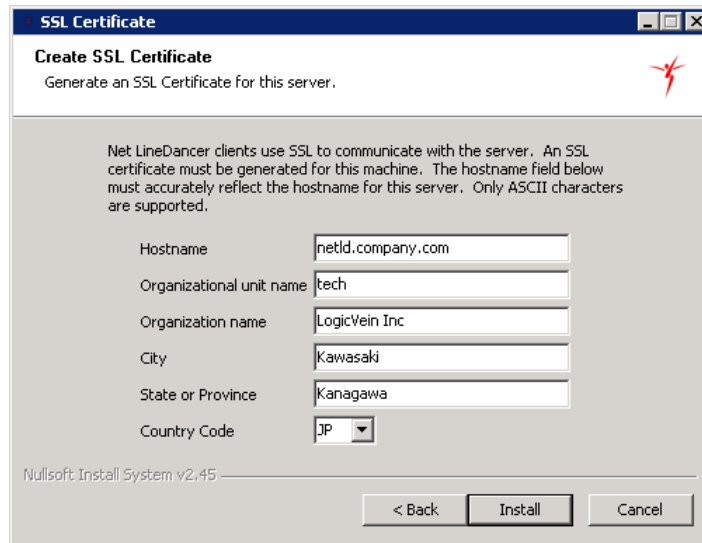
6. Select **Activate with existing License Key or License File** and click on the **Next** button.



7. License file field, enter your serial number and click **Next**.



- In the SSL Certificate dialog, enter required information of the followings and click on the **Install** button.



Note: Information entered for SSL Certification in this dialog can be edited after installation. See 23-2 Update of SSL Certification in the Manual for the details.

- Installation process will be started. Click on the **Next** button if Installation Complete dialog is displayed.



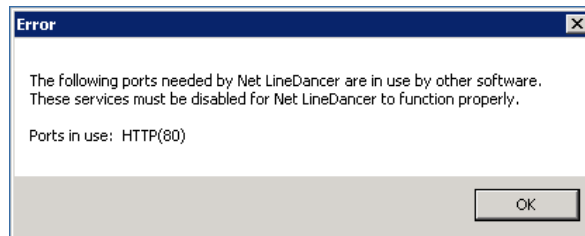
3-6 Evaluation version- Internet available

Obtain a license for evaluation version by sending to specified e-mail address in an install wizard. Follow the procedure below in an Internet connection to check the e-mail address.

1. Copy the netLD install program (netld-Enterprise-vesion-64bit.exe) to the target server and double click.
2. Select a language.



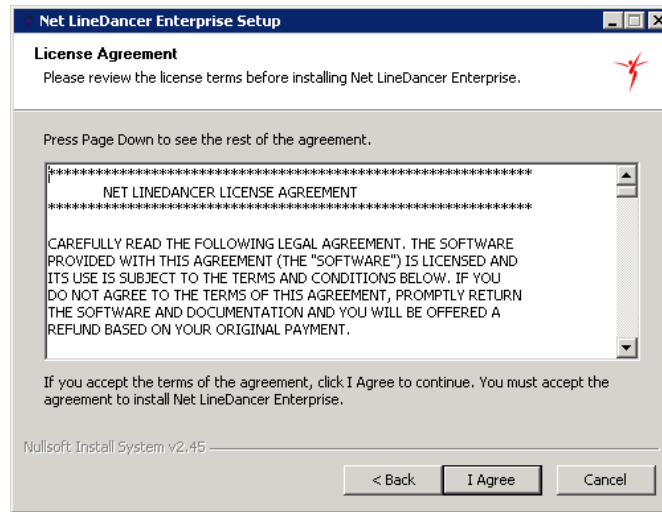
After selecting language to use, netLD checks port use and the following error message will be displayed if there is another application using the required port.



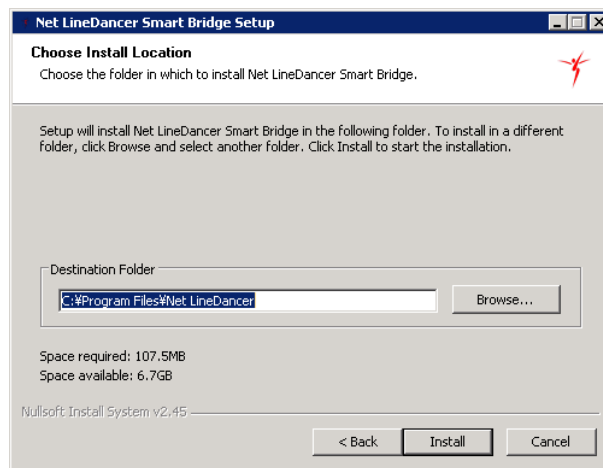
3. Setup wizard will be started. Click on the **Next** button to go License Agreement dialog.



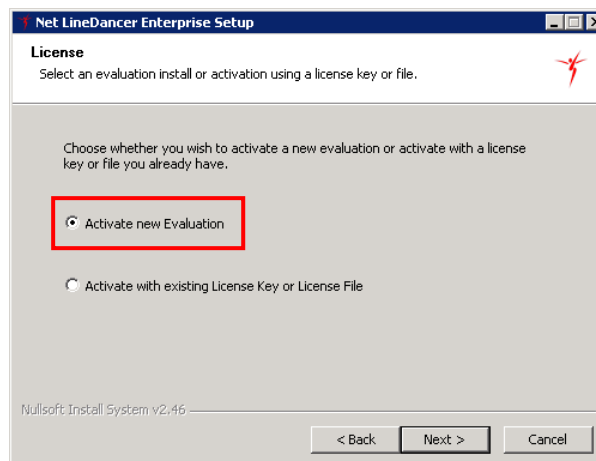
- In the License Agreement dialog, use page down control to read the rest of the agreement and click on the **I Agree** button to continue.



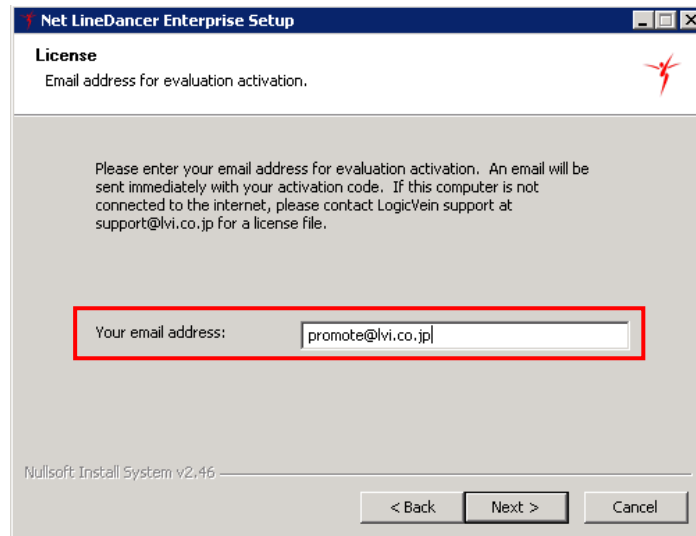
- Specify the install folder by using **Browse...** button and click on the **Next** button.



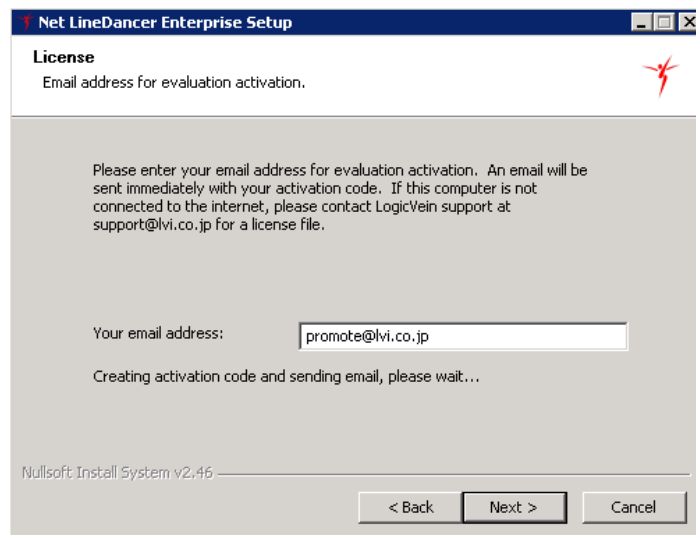
- Select Activate new Evaluation, and click on the **Next** button.



7. Enter your specified e-mail address and click on the **Next** button.



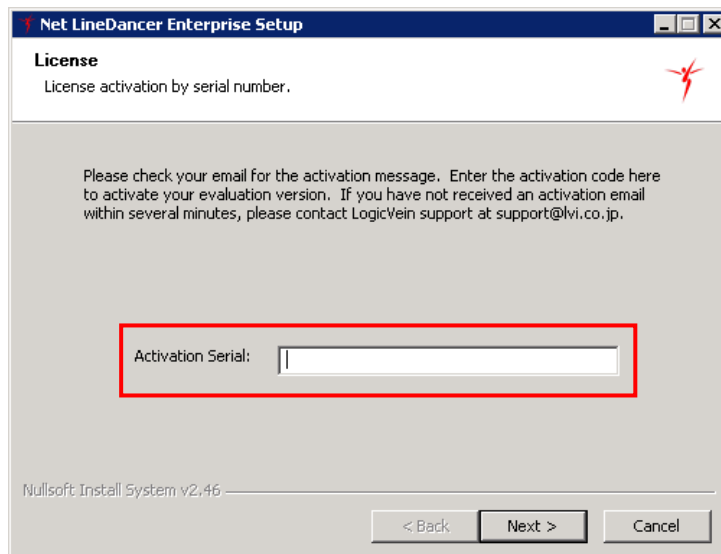
After click on the **Next** button, the evaluation license key will be sent to entered e-mail address from support@logicvein.com.



Sample:



- 8. License file field, enter a serial number shown in above and click **Next**.



- In the SSL Certificate dialog, enter required information of the followings and click on the **Install** button.



Note: Information entered for SSL Certification in this dialog can be edited after installation.

- Installation process will be started. Click on the **Next** button if Installation Complete dialog is displayed.



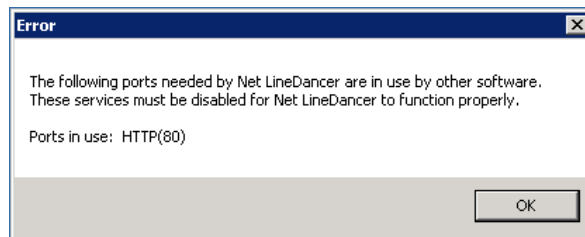
3-7 Evaluation version- Internet not available

If there is no Internet connection, an evaluation license file is required to be applied. Please contact to support@logicvein.com if you have no license file. At that time, MAC Address of the install server is required. If there are multiple NIC, send one of them that are connected with the cable.

1. Copy the netLD install program (netld-Enterprise-vesion-64bit.exe) to the target server and double click.
2. Select a language.



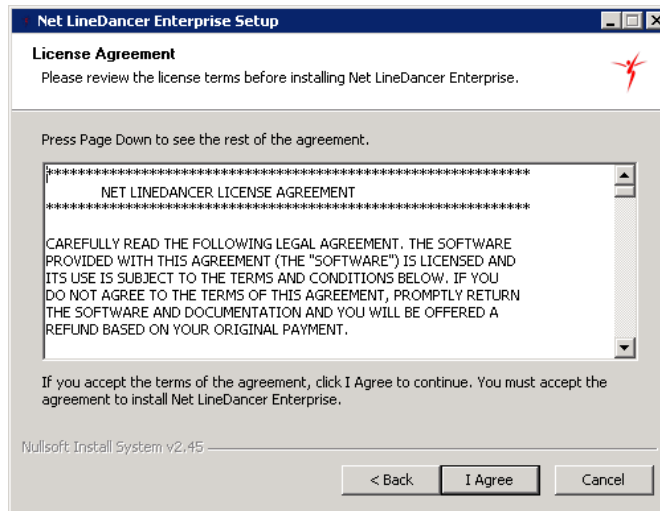
After selecting language to use, netLD checks port use and the following error message will be displayed if there is another application using the required port.



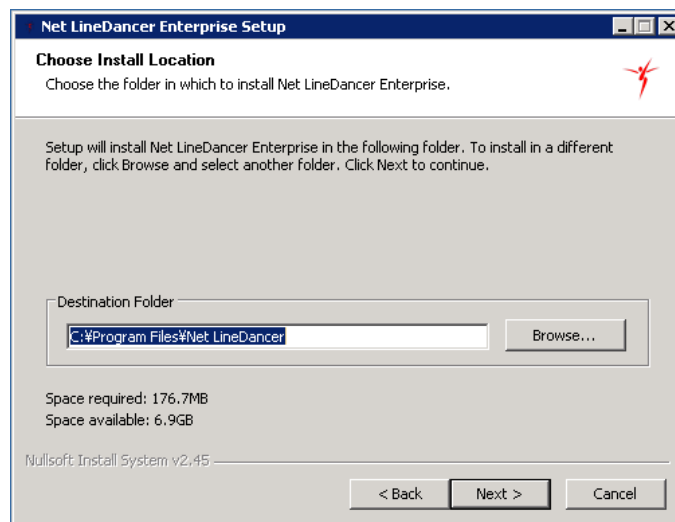
3. Setup wizard will be started. Click on the **Next** button to go License Agreement dialog.



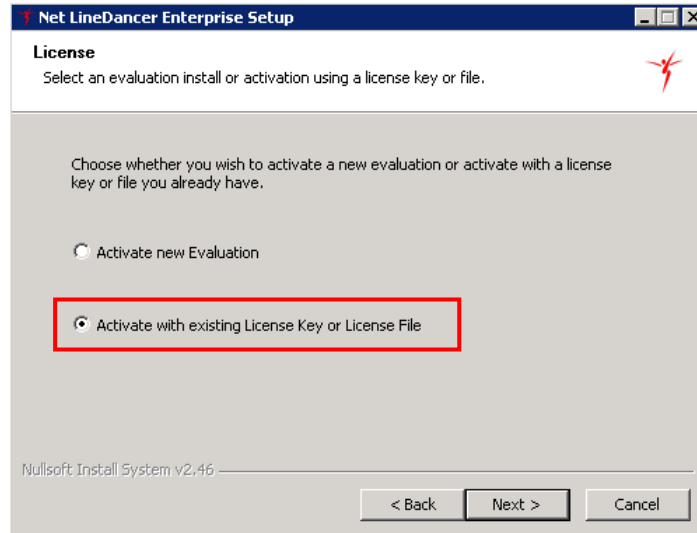
- In the License Agreement dialog, use page down control to read the rest of the agreement and click on the **I Agree** button to continue.



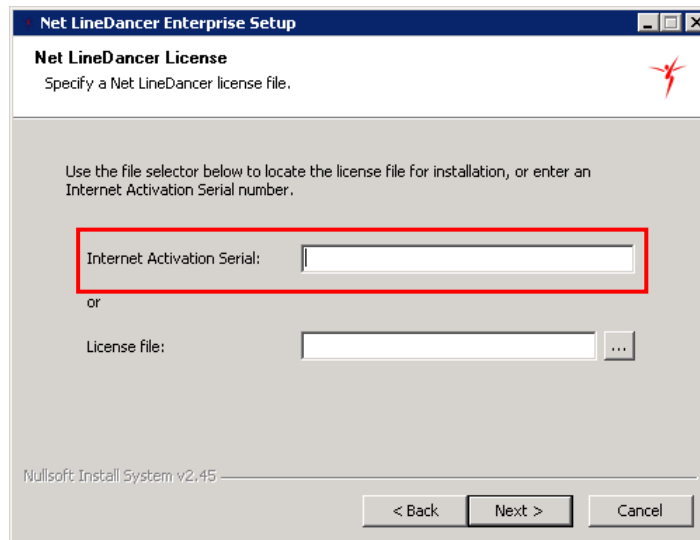
- Specify the install folder by using **Browse...** button and click on the **Next** button.



6. Select **Activate with existing License Key or License File** and click on the **Next** button.



7. License file field, enter your serial number and click **Next**.



- In the SSL Certificate dialog, enter required information of the followings and click on the **Install** button.



Note: Information entered for SSL Certification in this dialog can be edited after installation. See 23-2 Update of SSL.Cetification in the Manual for the details.

- Installation process will be started. Click on the **Next** button if Installation Complete dialog is displayed.



3-8 How to subscription license is updated in netLD?

If a user wishes to convert an evaluation into a full version, they need a new/updated license.enc file provided by LogicVein.

The license.enc file is copied into the osgi-config/security directory and the service restarted.

That's it, it should be activated with a new license at that point.

4 Directories

netLD installation creates following directories.

Directory	Description
adapters	Device interaction adapters.
backups	Automated daily backups.
core	Core service code.
crates	Core service code.
derby	Apache Derby database.
Java7	Java 7 Runtime distribution.
legal	Open Source library licenses and legal acknowledgements.
lucene	Apache Lucene full-text search indexes.
migration	Version upgrades scripts.
osgi-config	Internal configuration files.
Perl	Perl Runtime distribution.
real-time	Real-time change detection scripts.
reports	Internal report definition files.
scratch	Internal temporary file storage directory.
sql	Apache Derby database initialization files.
tmp	Java 7 temporary file storage directory.
tools	Device tool scripts.
ui	Core service code.
update	Online update temporary storage directory.
ztwrapper	Net LineDancer service executable and configuration.

5 Service Management and Login

5-1 Service

netLD service is automatically started when its program has been installed or operating system has been restarted.

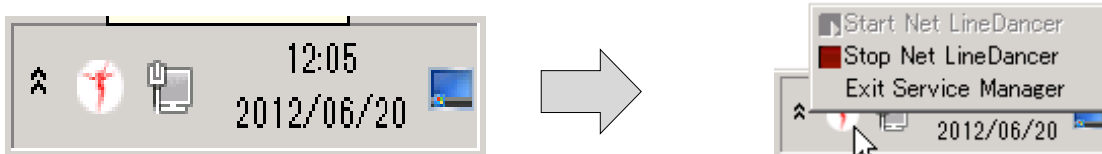
netLD service must be restarted in the following cases;

- When IP address of the netLD server has been changed manually,
- When Primary IP address of netLD has been changed in Server Settings menu,
- When HTTPS port setting has been changed in Server Settings menu,
- When new device adapters have been added manually,
- When backed up files have been restored manually,
- When license file has been renewed manually,
- When its program has been upgraded.

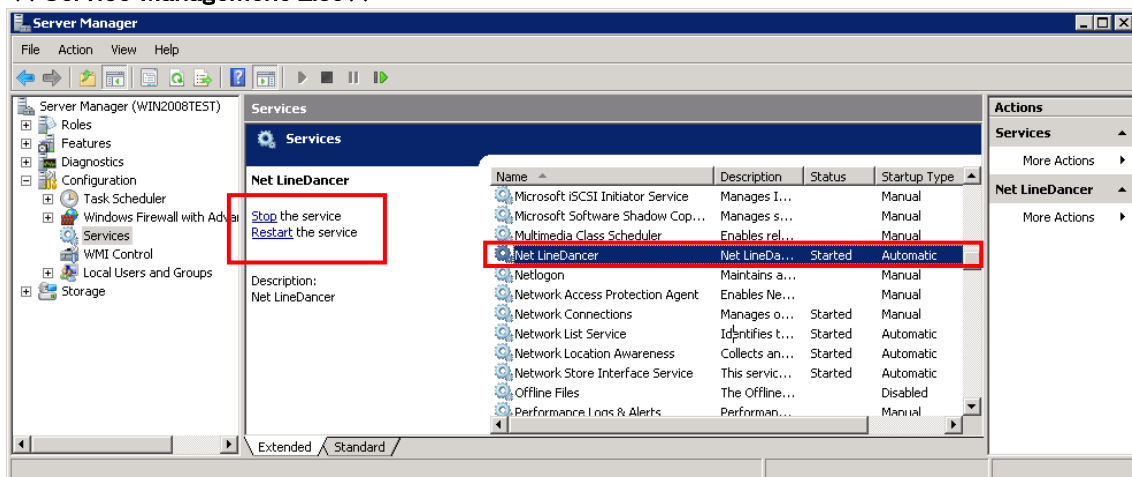
If you want to start or stop the service manually, you can use netLD icon in Windows Task Bar or Service Manager.

Task Bar Icon:

Right-click the icon to show Service Manager menu, and stop or start the service.



<< Service Management List >>



<<Commnd Prompt>>

net start netld

```
C:\Users\fujimura>net start netld
The Net LineDancer Enterprise service is starting..
The Net LineDancer Enterprise service was started successfully.
```

net stop netld

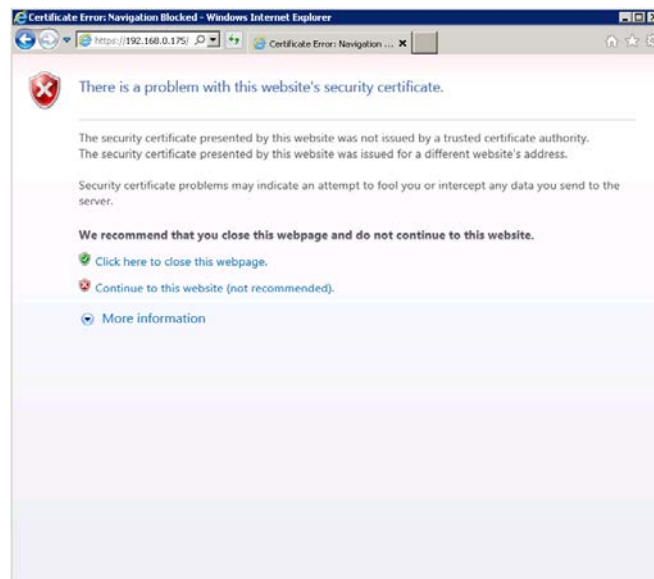
```
C:\Users\fujimura>net stop netld
The Net LineDancer Enterprise service was stopped successfully.
```

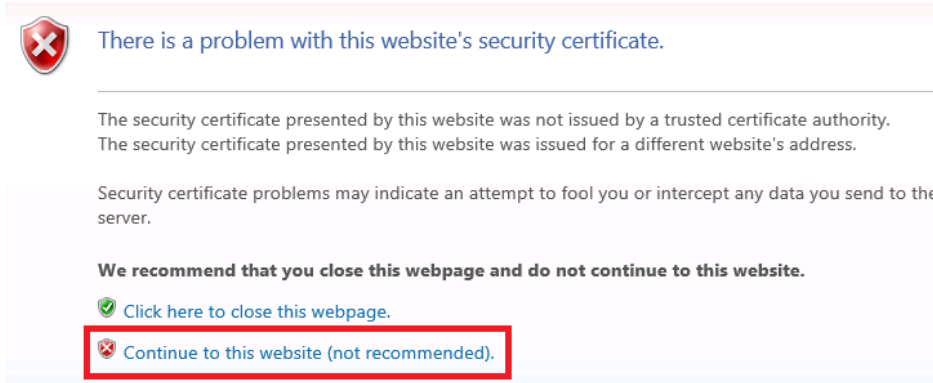
5-2 Login

1. Start web browser and enter “*https://IP address of the netLD server or host name/*” in address bar and press the **Enter** button.



2. Select **Continue to this website (not recommended)** if above is displayed.





Note: Security certificate message will be displayed since netLD has a certification authorized by own authorization entity but this does not affect operations of netLD at all.

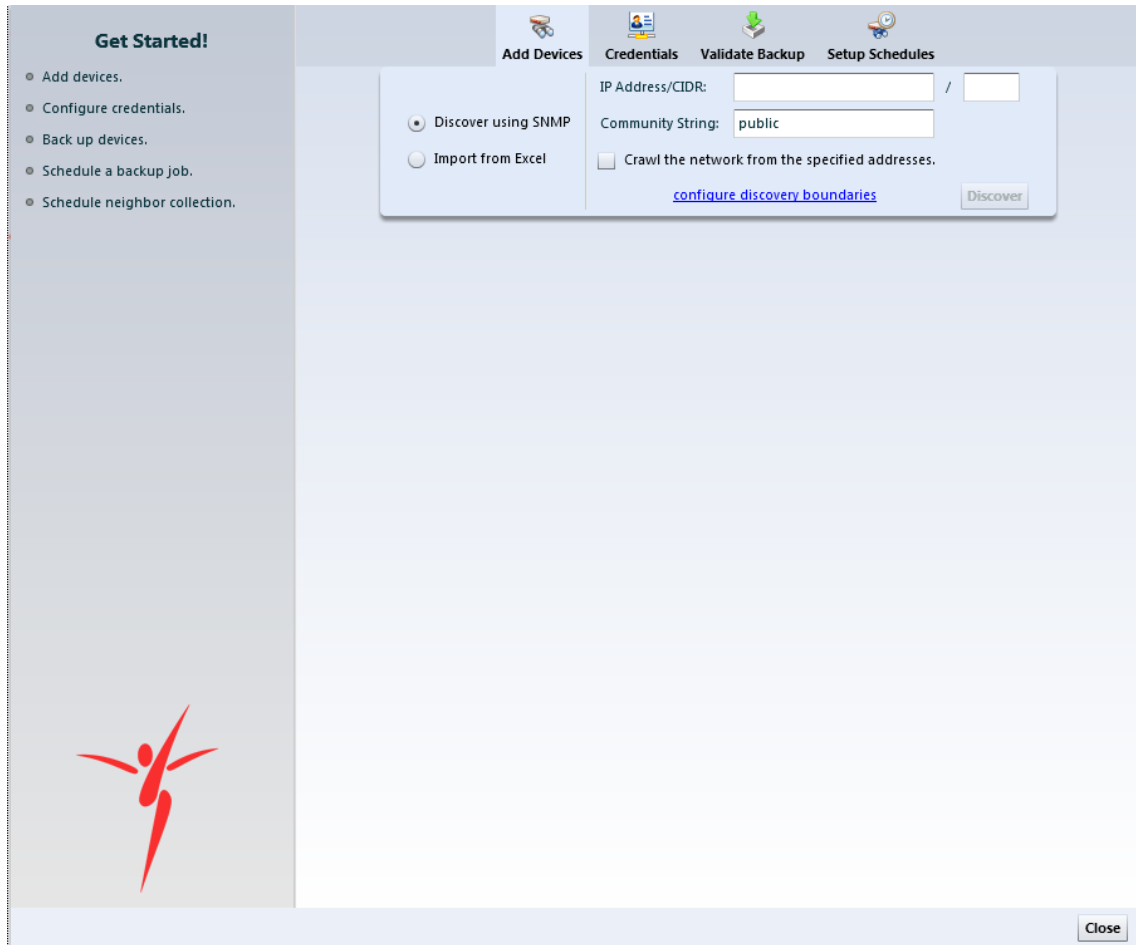
Note: You can make this dialog would not be displayed by install the SSL certification for the web browser. See 23. Security Certificate section in the Manual for more details.

3. netLD login screen will be displayed. For security reasons, whenever you log in to netLD, you must provide a username and associated password.



Username and password for initial login are set as below;
 Username: admin
 Password: password

Login is complete. If you log in netLD for the first time or you log in with the status which all management devices is deleted, the following start-up wizard is displayed.



Contacts

If you need further assistance or technical support about Net LineDancer, please contact below.

LogicVein, Inc. Technical Support

Tel: +81-44-852-4200

Fax: +81-44-854-0979

E-mail: support@logicvein.com

Notes:

- Closed for weekends, public holidays, New Year and summer holidays in Japanese time.
- We accept e-mails for 24 hours but we will reply on business hours listed above.

Net LineDancer Device Adaptor List

Please check the latest information in the following URL:

<http://www.logicvein.com/product/device.html>

<http://www.logicvein.com/product/pdf/matrix.pdf>